

Short residual limb

Example 1



Example 2

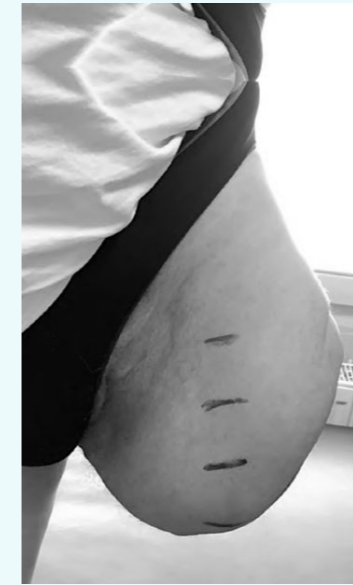


Example 3



With Your® Liner

Limb



3D model



Your® Liner



Indication

Residual limb is short. Patient's weight will subsequently be supported on a limited surface, leading to higher in-socket pressure. Limb length doesn't provide a very long lever to control the prosthesis.

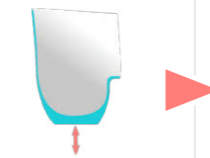


Typical issues

Suspension issues

Short stumps often face suspension issues:

- Distal locking systems are prone to pistoning, and short stumps can be particularly sensitive to this.
- Vacuum suspension is often impossible.



Limited proprioception

The residual limb only provides a short lever to control the prosthesis, which can make it harder for patients with such residual limbs



Key features



Anatomically tailored



Adapted compressions



Combined suspension systems

Your® Liner offers the possibility to combine pin-lock and silicone rings for vacuum suspension. Combining such systems can improve overall suspension, which can make the difference in cases where suspension is tricky, such as with short residual limbs.



Thicker distal cushion for longer control lever

Adding more material at the distal extremity can extend the residual limb segment, which can give a longer lever to better control the prosthesis.

How can Your® Liner help?

